

汉风·龙牙  
Catalog 2016-2017

**Royalmax**<sup>®</sup>  
汉风·龙牙

HANFONG MACHINERY CO.,LTD.WENZHOU

ADD: Block 6, No.28, Binhai Road 2, Konggang New District,  
Wenzhou City, Zhejiang Province 325025, China

Chinese Line: 0086-577-8670-5809 8670-5807

English Line: 0086-577-8670-5808

Fax: 0086-577-8670-5810

Http://www.royalairbrush.com

E-mail: Sales@royalairbrush.com

info@royalairbrush.com

royalairbrush@aol.com

Skype: Zhengjie4564

QQ: 771915630/76944869

温州汉风机械有限公司

地址：浙江温州市空港新区滨海二路28号6幢

内销：0577-86705809/86705807

外销：0577-86705808

传真：0577-86705810

Http://www.longya.net

E-mail: Sales@royalairbrush.com

Sales1@royalairbrush.com

QQ: 771915630/76944869







Manufacturer of  
Mini Air Compressor, Airbrush Kit

English [www.royalairbrush.com](http://www.royalairbrush.com) 中文 [www.longya.net](http://www.longya.net)

ROYAL AIR TOOLS



**Royalmax**<sup>®</sup>  
汉风·龙牙



# Royalmax®

Perfect for your excellent spray painting art!  
It's good for beautifying our life!

## Brief Introduction

Hanfong Machinery Co.,Ltd. (Royal Air Tools Co., Ltd.) designs and manufactures the most efficient and powerful oil-less mini air compressors, airbrushes, airbrush holders, sun tanning systems and accessories in wenzhou city,China.

Which enjoys convenient transportation and attractive scenery,only 200 km away from Ningbo seaport and about 500km away from Shanghai Seaport.

Our products are specially suited for Airbrush Tanning,Tattoo,Make-up, Airbrush T-shirt,Art Designing,Advertising Spray,and so on.these maintenace-free,ultra-quiet,and light weight products have a proven track record of quality,durability,and reliability.

We takes great pride in meeting the needs of its customers with speedy professionalism.our R&D department can customize its products to meet the unique requirements of your application. factory certified with ISO 9001,Air compressors with CE,GS, ETL,ROHS certification.



**ATE**  
ROHS  
Certificate of Conformity

Product: Mini Air Compressor  
Type/Model: M101

Applicant/Address: Wenzhou Hanfong Machinery Co., Ltd.  
No. 22 Eking Road, Eru Industrial Zone, Nanhujiang Town, Wenzhou, Zhejiang 325115, P. R. China

**Intertek**  
Test Verification of Conformity

Product/Tester: Mini Air Compressor (Mini Air Compressor)  
Factory and principal manufacturer: Wenzhou Hanfong Machinery Co., Ltd.  
Model: M101

Brand name: ROYALMAX

Reference Standard(s): EN 60950-1:2005+A1:2009+A2:2011 Electromagnetic compatibility (EMC) - Part 3: Limits of radiated emissions (limited test current) 15 A per phase

**Intertek**  
Certificate  
Prüfbescheinigung nach dem Produktsicherheitsgesetz

Product/Tester: Mini Air Compressor (Mini Air Compressor)  
Factory and principal manufacturer: Wenzhou Hanfong Machinery Co., Ltd.  
Model: M101

Brand name: ROYALMAX

Reference Standard(s): EN 60950-1:2005+A1:2009+A2:2011 Electromagnetic compatibility (EMC) - Part 3: Limits of radiated emissions (limited test current) 15 A per phase

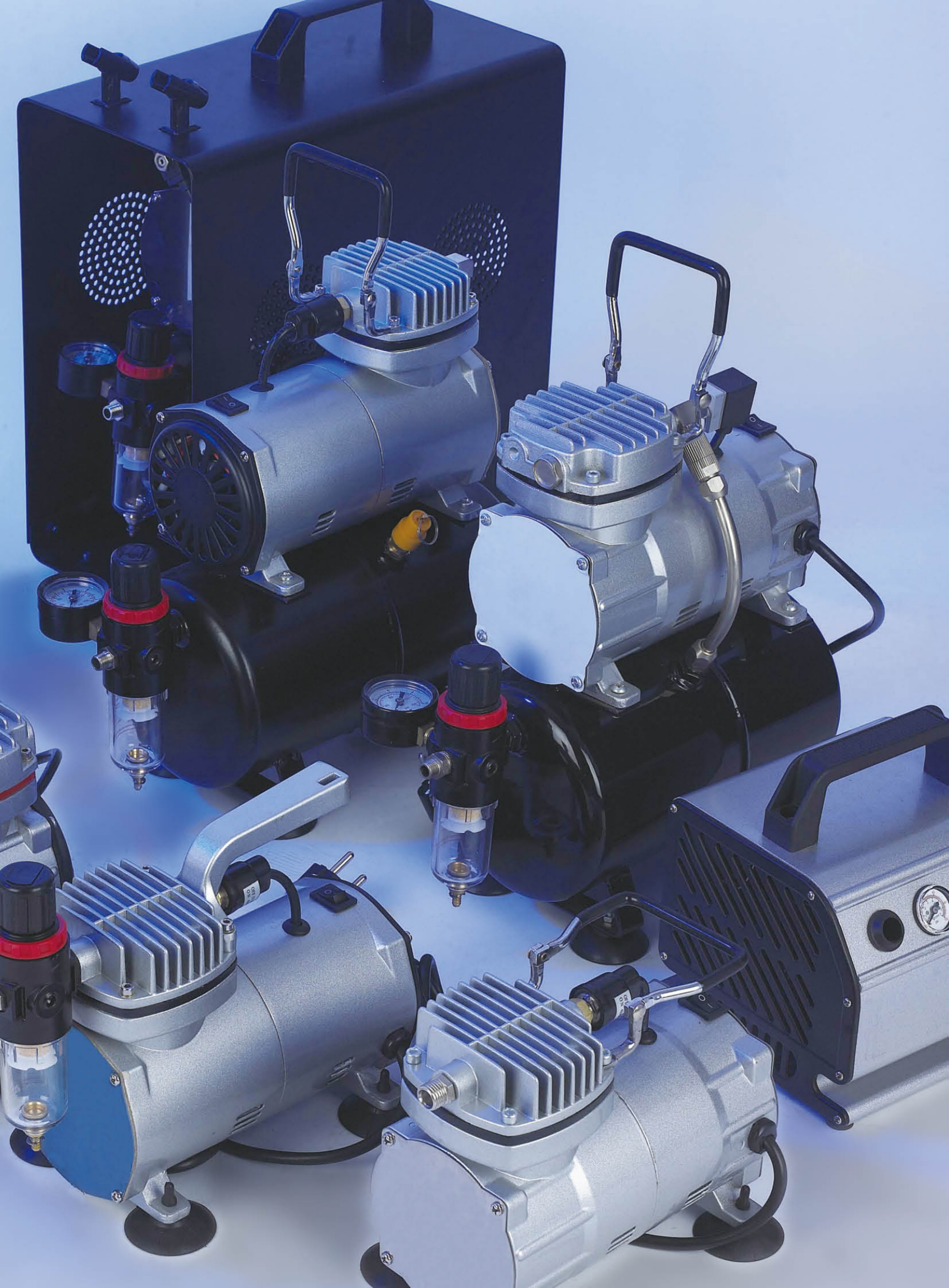
**Intertek**  
AUTHORIZATION TO MARK

Product/Tester: Mini Air Compressor (Mini Air Compressor)  
Factory and principal manufacturer: Wenzhou Hanfong Machinery Co., Ltd.  
Model: M101

Brand name: ROYALMAX

Reference Standard(s): EN 60950-1:2005+A1:2009+A2:2011 Electromagnetic compatibility (EMC) - Part 3: Limits of radiated emissions (limited test current) 15 A per phase







# Production Building



Office Area



Office Corner





Visiting of Chen Yixin , The Secretary of Wenzhou Municipal Committee to Wenzhou Hanfong Machinery Co.,Ltd( 温州市委书记陈一新，龙湾区委书记王军等领导访问汉风工厂 )



Area of CNC Machining



Area of Airbrush Packing



Motor Winding Room



Sample Room



Semi-Manufactured Airbrush



Semi-Manufactured Electric Motor





## Professional Makeup Airbrush Kits

HANFONG Series

### Field of application:

Beauty make-up, nail painting, body painting, arts and crafts, toys, cake decorating, art inkjet etc.

### Features:

- Environmental protection design, no air pollution and no noise;
- Non cylinder structure, continuous working;
- Adjustable air pressure;
- The airflow output steadily;
- Small volume, light weight, compact structure, Convenient to carry;
- Convenient airbrush holder, beauty in shape and utility in function;
- Soft and flexible latex air hose;
- Works worldwide with an international adapter;
- Protected by international Patent right.

### Specifications:

- Max Air Pressure: 18PSI
- Air Flow:13L/Min.
- AC adapter input:100-250V,50-60Hz
- Output: DC 12V,1.6A
- Weight: 0.62kg
- Dimension: 132\*92\*61mm
- Cable Length: 2M

- Carton Dimensions(CM):36x27.5x42.5
- PCS/CTN:20
- N.W./G.W.:12.4/14KGS

### Including:

- 1\*mini airbrush compressor
- 1\* latex hose(1.5M)
- 1\*AC adapter
- 1\*airbrush holder



TC-12







## Professional Makeup Airbrush Kits HANFONG Series

### Field of application:

Beauty make-up, nail painting, body painting, arts and crafts, toys, cake decorating, art inkjet etc.

### Features:

- Environmental protection design, no air pollution and no noise;
- Non cylinder structure, continuous working;
- Adjustable air pressure;
- The airflow output steadily;
- Small volume, light weight, compact structure, Convenient to carry;
- Convenient airbrush holder, beauty in shape and utility in function;
- Soft and flexible latex air hose;
- Works worldwide with an international adapter;
- Protected by international Patent right.

### Specifications:

- Max Air Pressure: 18PSI
- Air Flow:13L/Min.
- AC adapter input:100-250V,50-60Hz
- Output: DC 12V,1.6A
- Weight: 0.7kg
- Dimension: 132\*92\*61mm
- Cable Length: 2M
- Carton Dimensions(CM):46.5x37x26
- PCS/CTN:12
- N.W./G.W.:8.4/13KGS



TC-12K

### Including:

- 1\*mini airbrush compressor
- 1\*single action airbrush AB-209 (optional)
- 1\* latex hose(1.5M)
- 1\*AC adapter
- 1\*airbrush holder



TC-12AK



TC-12BK



TC-12CK



TC-12DK



TC-12EK

With a battery

### Battery airbrush compressor kit

#### Including:

- 1\*mini airbrush compressor
- 1\*single action airbrush AB-209 (optional)
- 1\* latex hose(1.5M)
- 1\*airbrush holder
- 1\*AC adapter
- 1\*AC charger
- 1\*lithium battery(1800Mah)
- Carton Dimensions(CM):46.5x37x26
- PCS/CTN:12
- N.W./G.W.:8.8/13.6KGS



TC-12K-DC





## Professional Makeup Airbrush Kits HANFONG Series



### TC-100

#### Field of application:

Beauty make-up, cosmetics, body painting, nail painting, cake decorating, spray flowers, arts and crafts, toys, art inkjet and beginner of hobbies.

#### Features :

- Non-oil design, no air pollution;
- It can start with pressure, and continuous work ;
- Pressure adjust way: by hand ;
- 360 degree circumvolve airbrush holder, for your convenient work
- Small volume, light weight, compact structure, Convenient to carry;
- Works worldwide with an international adapter;
- Protected by international Patent right.
- With light switch, please turn off the compressor when stop working.



#### Specification:

- Max.pressure:28psi
- Air flow: 10L/min
- AC adapter input: 100-250V, 50-60 HZ
- Output: 12V DC, 1.6A ,
- Carton Dimensions(CM):36x27.5x42.5
- PCS/CTN:20
- N.W./G.W.:12.8/14.4KGS

Note: It need to cool down after 30 minutes working.



Auto start and auto stop function

### TC-100A

#### Specification:

- Auto stop: 25psi
- Auto start: 15psi



### TC-100K

- Carton Dimensions(CM):69.5x22x26
- PCS/CTN:20
- N.W./G.W.:10/12.8KGS



#### Including:

- 1 X 12V DC mini compressor
- 1 x single action airbrush AB-207(optional)
- 1 x airbrush holder
- 1 x AC adapter
- 1 x air hose (1.8M)





## Airbrush Compressor HANFONG Series

### TC-80 series

#### Features:

- Piston type, oil free
- It can start with pressure, continuous working, powerful.
- Much safer! thermally protected! It will turn off automatically when the motor over heated.
- Low noise, 47db.
- Auto stop function.
- Pressure-adjustable.
- CE,GS, ETL, ROHS Approved.



TC-80



TC-801



TC-802



TC-803

Model	Suitable airbrush	power HP	Speed/min		Auto stop		Auto start		Air flow L/min	Adapter BSP	N.W. Kg	Single Dim. L*W*H(cm)	Carton Dim. L*W*H(cm)	PCS/CTN Pcs	Weight (Kg) N.w./G.w.
	Nozzle		50Hz	60Hz	Bar	Psi	Bar	Psi							
TC-80	0.2-1.0	1/5	1450	1700	4	57	3	43	23-25	1/4	3.4	21.5*13.5*17	50*29.5*51.5	6	20.4/23.4
TC-801	0.2-1.0	1/5	1450	1700	4	57	3	43	23-25	1/8	3.5	25.5*13.5*17	50*29.5*51.5	6	21/24
TC-802	0.2-1.0	1/5	1450	1700	4	57	3	43	23-25	1/8	3.6	25.5*13.5*20.5	50*29.5*51.5	6	21.6/24.6
TC-803	0.2-1.0	1/5	1450	1700	4	57	3	43	23-25	1/8	3.6	25.5*13.5*20.5	50*29.5*51.5	6	21.6/24.6
TC-802K	0.2-1.0	1/5	1450	1700	4	57	3	43	23-25	1/8	4	----	69*39*26.5	4	16/19.4



### TC-802K

- This high-quality airbrushing kit is perfect for commercial arts, illustration, photo retouching, temporary tattoos, cake decorating, crafts, hobbies and any other airbrushing items.

#### Including:

- 1\* airbrush compressor TC-802
- 1\* air hose AH-24
- 1\*airbrush holder AH-305(optional)
- 1\*dual- action airbrush AB-130 (optional)





## Airbrush Compressor HANFONG Series

### TC-81 series

#### Features:

- Piston type, oil free
- It can start with pressure, continuous working, powerful.
- Much safer! thermally protected! It will turn off automatically when the motor over heated.
- Low noise, 47db.
- Auto stop function.
- Pressure-adjustable.
- CE, GS, ETL, ROHS Approved.



TC-81



TC-811



TC-812



TC-813

Model	Suitable airbrush	power	Speed/min		Auto stop		Auto start		Air flow	Adapter	N.W.	Single Dim.	Carton Dim.	PCS/CTN	Weight (Kg)
	Nozzle		HP	50Hz	60Hz	Bar	Psi	Bar							
TC-81	0.2-1.0	1/5	1450	1700	4	57	3	43	23-25	1/4	3.4	21.5*13.5*17	50*29.5*51.5	6	20.4/23.4
TC-811	0.2-1.0	1/5	1450	1700	4	57	3	43	23-25	1/8	3.5	25.5*13.5*17	50*29.5*51.5	6	21/24
TC-812	0.2-1.0	1/5	1450	1700	4	57	3	43	23-25	1/8	3.6	25.5*13.5*20.5	50*29.5*51.5	6	21.6/24.6
TC-813	0.2-1.0	1/5	1450	1700	4	57	3	43	23-25	1/8	3.6	25.5*13.5*20.5	50*29.5*51.5	6	21.6/24.6
TC-812K	0.2-1.0	1/5	1450	1700	4	57	3	43	23-25	1/8	4	----	69*36*26.5	4	16/19.4



### TC-812K

- This high-quality airbrushing kit is perfect for commercial arts, illustration, photo retouching, temporary tattoos, cake decorating, crafts, hobbies and any other airbrushing items.

#### Including:

- 1\* airbrush compressor TC-812
- 1\* air hose AH-24
- 1\*airbrush holder AH-305(optional)
- 1\*dual- action airbrush AB-130 (optional)





## Airbrush Compressor HANFONG Series

### TC-82 series

#### Features:

- Piston type, oil free
- It can start with pressure, continuous working, powerful.
- Much safer! thermally protected! It will turn off automatically when the motor over heated.
- Low noise, 47db.
- Auto stop function.
- Pressure-adjustable.
- CE, GS, ETL, ROHS Approved.

Aluminum handle



TC-82



TC-821



TC-822



TC-823

Model	Suitable airbrush	power	Speed/min		Auto stop		Auto start		Air flow	Adapter	N.W.	Single Dim.	Carton Dim.	PCS/CTN	Weight (Kg)
	Nozzle		HP	50Hz	60Hz	Bar	Psi	Bar							
TC-82	0.2-1.0	1/5	1450	1700	4	57	3	43	23-25	1/4	3.4	21.5*13.5*17	50*29.5*51.5	6	20.4/23.4
TC-821	0.2-1.0	1/5	1450	1700	4	57	3	43	23-25	1/8	3.5	25.5*13.5*17	50*29.5*51.5	6	21/24
TC-822	0.2-1.0	1/5	1450	1700	4	57	3	43	23-25	1/8	3.6	25.5*13.5*20.5	50*29.5*51.5	6	21.6/24.6
TC-823	0.2-1.0	1/5	1450	1700	4	57	3	43	23-25	1/8	3.6	25.5*13.5*20.5	50*29.5*51.5	6	21.6/24.6
TC-822K	0.2-1.0	1/5	1450	1700	4	57	3	43	23-25	1/8	4	----	69*39*26.5	4	16/19.4



### TC-822K

- This high-quality airbrushing kit is perfect for commercial arts, illustration, photo retouching, temporary tattoos, cake decorating, crafts, hobbies and any other airbrushing items.

#### Including:

- 1\* airbrush compressor TC-822
- 1\* air hose AH-24
- 1\*airbrush holder AH-305(optional)
- 1\*dual- action airbrush AB-130 (optional)





## Airbrush Compressor

HANFONG Series



### TC-80T

#### Features:

- Piston type, oil free, none air polluted.
- It can start with pressure, continuous working, powerful.
- Air tank, providing smooth air flow, zero pulse.
- Safety protected devices for air tank.
- Air pressure gauge, air filter, pressure adjustable.
- Much safer! thermally protected! It will turn off automatically when the motor over heated.
- Low noise, 47db.
- CE,GS, ETL, ROHS Approved.



### TC-88T

#### Features:

- Piston type, oil free, none air polluted.
- It can start with pressure, continuous working, powerful.
- Air tank, providing smooth air flow, zero pulse.
- Safety protected devices for air tank.
- Air pressure gauge, air filter, pressure adjustable.
- Double air pressure switch:
  - Switch 1: low pressure auto stop switch for airbrush purpose
  - Switch 2: high pressure none stop switch for high pressure air tools.
- Much safer! thermally protected! It will turn off automatically when the motor over heated.
- Low noise, 47db.
- CE, GS, ETL, ROHS Approved.

### TC-90

#### Features:

- Twin cylinder, high air flow, can operate with many airbrushes.
- Piston type, oil free, none air polluted.
- It can start with pressure, continuous working, powerful.
- Air tank, providing smooth air flow, zero pulse.
- Safety protected devices for air tank.
- Air pressure gauge, air filter, pressure adjustable.
- Double air pressure switch:
  - Switch 1: low pressure auto stop switch for airbrush purpose
  - Switch 2: high pressure none stop switch for high pressure air tools.
- Much safer! thermally protected! It will turn off automatically when the motor over heated.
- Low noise, 47db.
- CE, GS,ETL, ROHS Approved.



Twin cylinder airbrush compressor

Model	Suitable airbrush	power HP	Speed/min		Auto stop		Auto start		Air flow L/min	Tank L	Max. Pressure		Adapter BSP	N.W. Kg	Single Dim. L*W*H(cm)	Carton Dim. L*W*H(cm)	PCS/CTN Pcs	Weight (Kg) N.w./G.w.
	Nozzle		50Hz	60Hz	Bar	Psi	Bar	Psi			Bar	Psi						
TC-80T	0.2-1.0	1/5	1450	1700	4	57	3	43	23-25	3.0	--	--	1/8	5	31*13.5*31	68*32.5*34.5	4	20/23
TC-88T	0.2-1.0	1/5	1450	1700	4	57	3	43	30-35	3.0	6	86	1/8	5	31*13.5*31	68*32.5*34.5	4	20/23
TC-90	ALL	1/3	1450	1700	4	57	3	43	30-35	--	6	86	1/8	5.6	32*13.5*20.5	67*38.5*26	4	22.4/25.4





## Airbrush Compressor HANFONG Series



**Twin cylinder  
airbrush compressor with tank**

### TC-90T

#### Features:

- Twin cylinder, high air flow, can operate with many airbrushes.
- Piston type, oil free, none air polluted.
- Air tank, providing smooth air flow, zero pulse.
- Safety protected devices for air tank.
- Air pressure gauge, air filter, pressure adjustable.
- Double air pressure switch:
  - Switch 1: low pressure auto stop switch for airbrush purpose
  - Switch 2: high pressure none stop switch for high pressure air tools.
- Much safer! thermally protected! It will turn off automatically when the motor over heated.
- Can operate with small air nailer tools, spray gun.
- Low noise, 47db.
- CE, GS, ETL, ROHS Approved

Model	Suitable airbrush	power HP	Speed/min		Auto stop		Auto start		Air flow L/min	Tank L	Max. Pressure		Adapter BSP	N.W. Kg	Single Dim. L*W*H(cm)	Carton Dim. L*W*H(cm)	PCS/CTN Pcs	Weight (Kg) N.w./G.w.
	Nozzle		50Hz	60Hz	Bar	Psi	Bar	Psi			Bar	Psi						
TC-90T	ALL	1/3	1450	1700	4	57	3	43	30-35	3.5	6	86	1/8	7	32*13.5*31	51*36*35	3	21/24
TC-50	0.2-0.5	1/8	2900	3400	--	--	--	--	13-15	--	3	43	1/8	2.2	15*12.5*16.5	79*42*19.5	10	22/25
TC-50K	0.2-0.5	1/8	2900	3400	--	--	--	--	13-15	--	3	43	1/8	2.6	----	43.5*35.5*43.5	8	20.8/23.8

### TC-50

#### Features:

- Piston type, oil free
- It can start with pressure, continuous working, powerful.
- The pressure gauge can show the working pressure and max pressure.
- A built-in brush holder for holding one air brush conveniently.
- Much safer! thermally protected! It will turn off automatically when the motor over heated.
- Low noise, 49db.
- CE, GS, ETL, ROHS Approved.



### TC-50K

Professional nail art airbrush compressor kits

#### Including:

- Airbrush Compressor: TC-50
- Airbrush: AB-135(optional)
- Air hose: AH-24
- Mini Filter: AF-15





## Airbrush Compressor

HANFONG Series

### TC-802S

#### Features:

- Compressor with cover, with airbrush holder.
- Piston type, oil free
- Air pressure gauge, air filter, pressure adjustable.
- It can start with pressure, continuous working, powerful.
- Much safer! thermally protected! It will turn off automatically when the motor over heated.
- Low noise, 47db.
- Auto stop function.
- CE,GS, ETL, ROHS Approved.



### TC-803S

#### Features:

- Compressor with cover, with airbrush holder.
- Piston type, oil free
- Air pressure gauge, air filter, pressure adjustable.
- It can start with pressure, continuous working, powerful.
- Much safer! thermally protected! It will turn off automatically when the motor over heated.
- Low noise, 47db.
- Auto stop function.
- CE, GS,ETL, ROHS Approved.



Model	Suitable airbrush	power	Speed/min		Auto stop		Auto start		Air flow	Tank	Max. Pressure		Adapter	N.W.	Single Dim.	Carton Dim.	PCS/CTN	Weight (Kg)
	Nozzle		HP	50Hz	60Hz	Bar	Psi	Bar			Psi	L/min						
TC-802S	0.2-1.0	1/5	1450	1700	4	57	3	43	23-25	--	--	--	1/8	4.6	26.5*14*21.5	53.5*30.5*25.5	4	18.4/21.4
TC-803S	0.2-1.0	1/5	1450	1700	4	57	3	43	23-25	--	--	--	1/8	4.6	26.5*14*21.5	53.5*30.5*25.5	4	18.4/21.4
TC-80SE	0.2-1.0	1/5	1450	1700	4	57	3	43	23-25	--	--	--	1/8	5	26.5*14*21.5	50*29.5*51.5	6	30/33

### TC-80SE

#### Features:

- Compressor with cover, with airbrush holder.
- Piston type, oil free
- Air pressure gauge, air filter, pressure adjustable.
- It can start with pressure, continuous working, powerful.
- Much safer! thermally protected! It will turn off automatically when the motor over heated.
- Low noise, 47db.
- Auto stop function.
- CE,GS, ETL, ROHS Approved.







## Airbrush Compressor HANFONG Series

### TC-90TS

#### Features:

- Twin cylinder airbrush compressor with tank with cover.
- High air flow, can operate with many airbrushes.
- Piston type, oil free, none air polluted.
- Air tank, providing smooth air flow, zero pulse.
- Safety protected devices for air tank.
- Air pressure gauge, air filter, pressure adjustable.
- Double air pressure switch:
  - Switch 1: low pressure auto stop switch for airbrush purpose
  - Switch 2: high pressure none stop switch for high pressure air tools.
- Much safer! thermally protected! It will turn off automatically when the motor over heated.
- Can operate with small air nailer tools,spray gun.
- Low noise, 47db.
- CE, GS,ETL, ROHS Approved

With Cover.



**Twin cylinder  
airbrush compressor  
with tank with cover.**

Model	Suitable airbrush	power HP	Speed/min		Auto stop		Auto start		Air flow L/min	Tank L	Max. Pressure		Adapter BSP	N.W. Kg	Single Dim. L*W*H(cm)	Carton Dim. L*W*H(cm)	PCS/CTN Pcs	Weight (kg) N.w./G.w.
	Nozzle		50Hz	60Hz	Bar	Psi	Bar	Psi			Bar	Psi						
TC-90TS	ALL	1/3	1450	1700	4	57	3	43	30-35	3.5	6	86	1/8	10.5	35*14*36	49.5*38*38.5	3	31.5/34.5
AK-100	0.2-1.0	1/5	1450	1700	4	57	3	43	23-25	--	--	--	1/8	5	38.5*31.5*27	80*32.6*28	2	10/16

### AK-100

#### Including:

- 1×TC-802 Airbrush Compressor
- 1×AB-130 Airbrush (0.3mm Nozzle)
- 1×AH-24 air hose
- 1×AH-501 airbrush cleaning pot
- 1×AH-302 airbrush holder
- 1×Aluminum box







## Mini Air Compressor HANFONG Series



TC-06

### TC-06

#### Field of application:

Widely used in home decoration, construction scaffolding, advertising, furniture, toys, arts and crafts, fine arts products, equipment, paint, coating on the surface. Insecticides, spray, air disinfection of flowers, cars, and other vehicles and inflatable balls. Or for use in medical, environmental, chemical, gas, automatic control of scientific research and other industries to provide sources.

#### Features:

- Oil free, membrane type, low noise , no air polluted ;
- Small volume, light weight, compact instruction, easy for moving work ;
- The pump have international certificate, and have high quality ;
- Ong life, pass more than 1000hours continuous test, steady in performance ;
- With light on/off switch, reminding users to shut off the power when not use the compressor ;
- Cooperate with 472p spray gun is ideal spray tools area spraying ;
- Cooperate with ah-21 and other airbrushes, for general spraying ;
- Cooperate with ah-25 and other air hose for inflating cars and balls ;
- Low noise, about 55db.

### TC-06A

Dual voltage portable air compressor(110V/220V)



TC-06A



DOUBLE SWITCH

Switch 1:110V  
Switch 2:220V

Model	power		Speed/min		Supply Air Constructure	Air flow L/min	Max. Pressure		Adapter BSP	N.W. Kg	Single Dim. L*W*H(cm)	Carton Dim. L*W*H(cm)	PCS/CTN Pcs	Weight (kg) N.w./G.w.
	HP		50Hz	60Hz			Bar	Psi						
TC-06	1/4		1450	1700	Membrane	65-68	3.5	50	1/4	4.5	25*12.5*17	44.3*28.6*40.5	6	27/29
TC-06A	1/4		1450	1700	Membrane	65-68	3.5	50	1/4	4.5	25*12.5*17	44.3*28.6*40.5	6	27/29



### TC-06K

#### Including:

- 1\* mini air compressor TC-06
- 1\* air hose AH-31(1.8M)
- 1\*spray gun 472P (optional)





## Mini Air Compressor HANFONG Series



TC-09

### TC-09

#### Field of application:

Widely used in home decoration, construction scaffolding, advertising, furniture, toys, arts and crafts, fine arts products, equipment, paint, coating on the surface. Insecticides, spray, air disinfection of flowers, cars, and other vehicles and inflatable balls. Or for use in medical, environmental, chemical, gas, automatic control of scientific research and other industries to provide sources.

#### Features:

- Oil free, membrane type, low noise , no air polluted ;
- Small volume, light weight, compact instruction, easy for moving work ;
- The pump have international certificate, and have high quality ;
- Long life, pass more than 1000hours continuous test, steady in performance ;
- With light on/off switch, reminding users to shut off the power when not use the compressor ;
- Cooperate with 472p spray gun is ideal spray tools area spraying ;
- Cooperate with ah-21 and other airbrushes, for general spraying ;
- Cooperate with ah-25 and other air hose for inflating cars and balls ;
- Low noise, about 55db

### TC-09A

Dual voltage portable air compressor(110V/220V)



TC-09A



#### DOUBLE SWITCH

Switch 1:110V  
Switch 2:220V

Model	power		Speed/min		Supply Air	Air flow	Max. Pressure		Adapter	N.W.	Single Dim.	Carton Dim.	PCS/CTN	Weight (kg)
	HP	50Hz	60Hz	Constructure	L/min	Bar	Psi	BSP	Kg	L*W*H(cm)	L*W*H(cm)	Pcs	N.w./G.w.	
TC-09	1/3	1450	1700	Membrane	128-135	3.5	50	1/4	9	37.6*16.5*25.5	57*41.5*28.5	3	27/30	
TC-09A	1/3	1450	1700	Membrane	128-135	3.5	50	1/4	9	37.6*16.5*25.5	57*41.5*28.5	3	27/30	

### TC-09K

#### Including:

- 1\* mini air compressor TC-09
- 1\* air hose AH-31(1.8M)
- 1\*spray gun 472P (optional)







## Airbrush Compressor ROYAL Series

### TC-20 series

- Piston type, oil free
- It can start with pressure, continuous working, powerful.
- Much safer! thermally protected!
- It will turn off automatically when the motor over heated.
- Low noise, 47db.
- Auto stop function.
- Pressure-adjustable.
- CE, GS,ETL, ROHS Approved.



TC-20



TC-20 Black



TC-20A



TC-20B



TC-20C

Model	Suitable airbrush	power HP	Speed/min		Auto stop		Auto start		Air flow L/min	Adapter BSP	N.W. Kg	Single Dim. L*W*H(cm)	Carton Dim. L*W*H(cm)	PCS/CTN Pcs	Weight (Kg) N.w./G.w.
	Nozzle		50Hz	60Hz	Bar	Psi	Bar	Psi							
TC-20	0.2-1.0	1/5	1450	1700	4	57	3	43	23-25	1/4	3.4	21.5*13.5*17	50*29.5*51.5	6	20.4/23.4
TC-20A	0.2-1.0	1/5	1450	1700	4	57	3	43	23-25	1/8	3.5	25.5*13.5*17	50*29.5*51.5	6	21/24
TC-20B	0.2-1.0	1/5	1450	1700	4	57	3	43	23-25	1/8	3.6	25.5*13.5*20.5	50*29.5*51.5	6	21.6/24.6
TC-20C	0.2-1.0	1/5	1450	1700	4	57	3	43	23-25	1/8	3.6	25.5*13.5*20.5	50*29.5*51.5	6	21.6/24.6
TC-20BK	0.2-1.0	1/5	1450	1700	4	57	3	43	23-25	1/8	4	----	69*39*26.5	4	16/19.4



### TC-20BK

- This high-quality airbrushing kit is perfect for commercial arts, illustration, photo retouching, temporary tattoos, cake decorating, crafts, hobbies and any other airbrushing items.
- Airbrush compressor: TC-20B
- Airbrush: AB-130(optional)
- Air Hose: AH-24
- Holder:AH-305(optional)





## Airbrush Compressor

ROYAL Series

Aluminum handle

### TC-22 series

- Piston type, oil free
- It can start with pressure, continuous working, powerful.
- Much safer! thermally protected!
- It will turn off automatically when the motor over heated.
- Low noise, 47db.
- Auto stop function.
- Pressure-adjustable.
- CE,GS, ETL, ROHS Approved.



TC-22



TC-22A



TC-22B



TC-22C

Model	Suitable airbrush	power	Speed/min		Auto stop		Auto start		Air flow	Adapter	N.W.	Single Dim.	Carton Dim.	PCS/CTN	Weight (Kg)
	Nozzle		HP	50Hz	60Hz	Bar	Psi	Bar							
TC-22	0.2-1.0	1/5	1450	1700	4	57	3	43	23-25	1/4	3.4	21.5*13.5*17	50*29.5*51.5	6	20.4/23.4
TC-22A	0.2-1.0	1/5	1450	1700	4	57	3	43	23-25	1/8	3.5	25.5*13.5*17	50*29.5*51.5	6	21/24
TC-22B	0.2-1.0	1/5	1450	1700	4	57	3	43	23-25	1/8	3.6	25.5*13.5*20.5	50*29.5*51.5	6	21.6/24.6
TC-22C	0.2-1.0	1/5	1450	1700	4	57	3	43	23-25	1/8	3.6	25.5*13.5*20.5	50*29.5*51.5	6	21.6/24.6
TC-22BK	0.2-1.0	1/5	1450	1700	4	57	3	43	23-25	1/8	4	----	69*39*26.5	4	16/19.4



### TC-22BK

- This high-quality airbrushing kit is perfect for commercial arts, illustration, photo retouching, temporary tattoos, cake decorating, crafts, hobbies and any other airbrushing items.
- Airbrush Compressor: TC-22B
- Airbrush: AB-130(optional)
- Air Hose: AH-24
- Holder: AH-305(optional)





## Airbrush Compressor ROYAL Series

### TC-20T

#### Features:

- Piston type, oil free, none air polluted.
- It can start with pressure, continuous working, powerful.
- Air tank, providing smooth air flow, zero pulse.
- Safety protected devices for air tank.
- Air pressure gauge, air filter, pressure adjustable.
- Much safer! thermally protected! It will turn off automatically when the motor over heated.
- Low noise, 47db.
- CE, GS,ETL, ROHS Approved.



TC-20T



With Frame

### TC-30F

**Twin cylinder  
airbrush compressor  
with tank with frame**

### TC-30F

#### Features:

- Twin cylinder airbrush compressor with tank with frame.
- High air flow, can operate with many airbrushes.
- Piston type, oil free, none air polluted.
- Air tank, providing smooth air flow, zero pulse.
- Safety protected devices for air tank.
- Air pressure gauge, air filter, pressure adjustable.
- Double air pressure switch:
  - Switch 1: low pressure auto stop switch for airbrush purpose
  - Switch 2: high pressure none stop switch for high pressure air tools.
- Much safer! thermally protected! It will turn off automatically when the motor over heated.
- Can operate with small air nailer tools, spray gun.
- Low noise, 47db.
- CE, GS,ETL, ROHS Approved

Model	Suitable airbrush	power HP	Speed/min		Auto stop		Auto start		Air flow L/min	Tank L	Max. Pressure		Adapter BSP	N.W. Kg	Single Dim. L*W*H(cm)	Carton Dim. L*W*H(cm)	PCS/CTN Pcs	Weight (kg) N.w./G.w.
	Nozzle		50Hz	60Hz	Bar	Psi	Bar	Psi			Bar	Psi						
TC-20T	0.2-1.0	1/5	1450	1700	4	57	3	43	23-25	3.0	--	--	1/8	5	31*13.5*31	68*32.5*34.5	4	20/23
TC-30F	ALL	1/3	1450	1700	4	57	3	43	30-35	3.0	6	86	1/8	8	34*30*28	61.5*35*21.5	2	16/19
TC-18	0.2-1.0	1/5	1450	1700	4	57	3	43	23-25	--	--	--	1/8	3.6	25.5*13.5*20.5	50*29.5*51.5	6	21.6/24.6



### TC-18

#### Features:

- Piston type, oil free
- It can start with pressure, continuous working, powerful.
- Much safer! thermally protected! It will turn off automatically when the motor over heated.
- Air pressure gauge, air filter, pressure adjustable.
- Low noise, 47db.
- Auto stop function.
- Pressure-adjustable.
- CE, GS,ETL, ROHS Approved.



## Inflation Air Compressor/Vacuum Pump

### Features:

- Oil less, piston type, none air polluted
- Collocated with multi-functional charging air hose suitable for:
  - A. charging cars, auto bikes.
  - B. Charging bikes.
  - C. Charging different kinds of balls.
- Open and closed the tyre valves.
- The gauge can show the charging pressure directly.
- It can start with pressure, powerful performance.
- Low noise, about 47db .



**TC-802W**  
Inflation air compressor



**TC-80W**  
Inflation air compressor

Model	power	Speed/min		Air Producing		Air flow		Max. Pressure		Vacuum Degree	Adapter	N.W.	Single Dim.	Carton Dim.	PCS/CTN	Weight
		50Hz	60Hz	Constructure	Dia	Qty	L/min	Bar	Psi							
TC-802W	1/5	1450	1700	Piston	40	1	23-25	4	57	--	AH-25A	3.7	25.5*13.5*17	50*29.5*51.5	6	22.2/25.2
TC-80W	1/5	1450	1700	Piston	40	1	23-25	6	86	--	AH-25	3.5	21.5*13.5*17	50*29.5*51.5	6	21/24
TC-88	1/5	1450	1700	Piston	40	1	23-25	--	--	600	1/8	3.5	25.5*13.5*17	50*29.5*51.5	6	21/24
TC-88W	1/5	1450	1700	Piston	40	1	23-25	6	86	600	1/8	3.4	21.5*13.5*17	50*29.5*51.5	6	20.4/23.4
TC-99	1/3	1450	1750	Piston	40	2	30-35	--	--	600	1/8	5.5	30*13.5*20.5	67*38.5*26	4	22/25



**Vacuum pump**



**Inflation air compressor/  
vacuum pump**



**Twin Cylinder  
Vacuum pump**

### TC-88

#### Features:

- Oil less, piston type, none air polluted
- The gauge can show the vacuum degree when vacuuming.
- Low noise, about 47db

### TC-88W

#### Features:

- Oil less, piston type, none air polluted
- Collocated with multi-functional charging air hose suitable for:
  - A. charging cars, auto bikes.
  - B. Charging bikes.
  - C. Charging different kinds of balls.
- Open and closed the tyre valves.
- The gauge can show the charging pressure directly.
- The customer change the inflation pump into vacuum pump can easily just change the muffle and air outlet.
- Low noise, about 47db .

### TC-99

#### Features:

- Oil less, piston type, none air polluted
- The gauge can show the vacuum degree when vacuuming.
- Low noise, about 47db





## Performance Multi-Purpose Series

Versatile and reliable high performance multi-purpose precision airbrushes

### AB-130

- Feed Type: Gravity
- Standard Nozzle Dia.:0.3 mm
- Alternative Nozzle Size:0.2mm, 0.3mm, 0.5mm
- Cup Capacity:7CC
- Working Pressure:15-50PSI
- Dual-Action Trigger Air-paint Control.
- Carton Dimensions(CM): 55.5x42X25
- PCS/CTN:50
- N.W./G.W.:15/17.5KGS

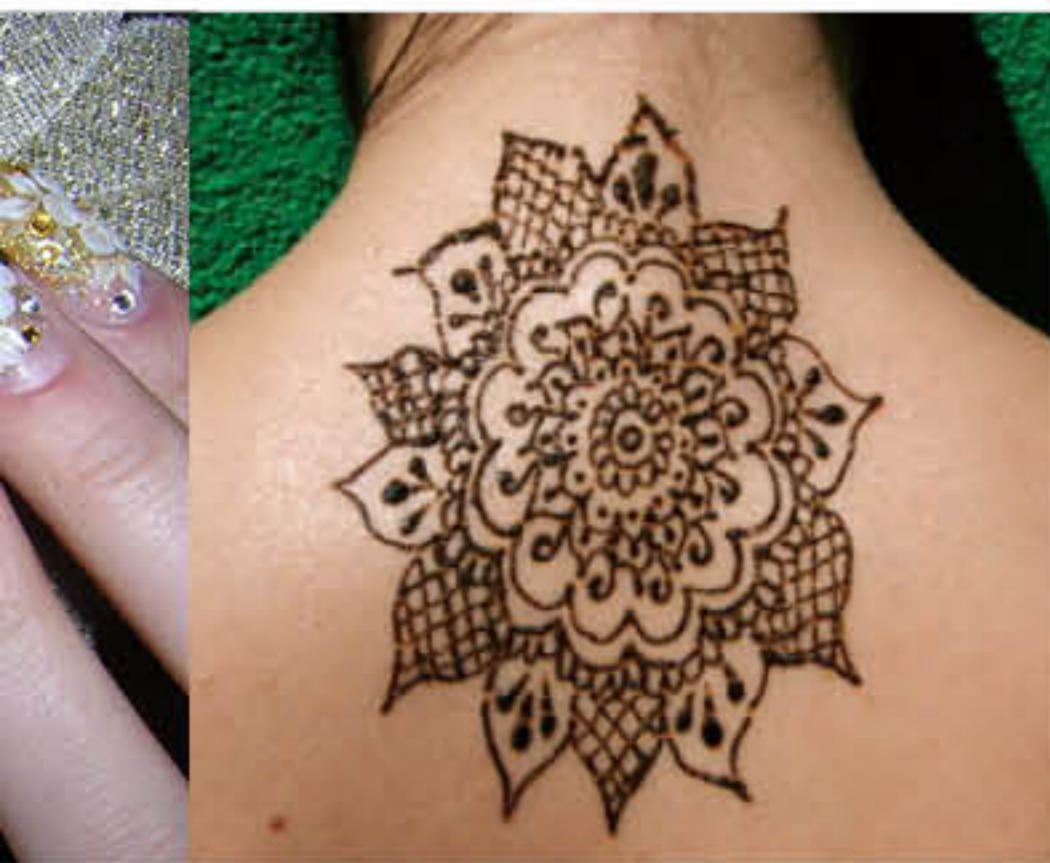


### AB-132

- Feed Type: Gravity
- Standard Nozzle Dia.:0.3 mm
- Alternative Nozzle Size:0.2mm, 0.3mm, 0.5mm
- Cup Capacity:7CC
- Working Pressure:15-50PSI
- Dual-Action Trigger Air-paint Control.
- Carton Dimensions(CM): 55.5x42X25
- PCS/CTN:50
- N.W./G.W.:15/17.5KGS







## Performance Multi-Purpose Series

Versatile and reliable high performance multi-purpose precision airbrushes

### AB-133

- Feed Type: Suction
- Standard Nozzle Dia.:0.3 mm
- Alternative Nozzle Size:0.2mm, 0.3mm, 0.5mm
- Cup Capacity:22CC
- Working Pressure:15-50PSI
- Dual-Action Trigger Air-paint Control.
- Carton Dimensions(CM):57x40x30
- PCS/CTN:50
- N.W./G.W.:16/18.5KGS



AB-133A



AB-133B



AB-133C



AB-133D



AB-133E

### AB-134

- Feed Type: Gravity & Suction
- Standard Nozzle Dia.:0.3 mm
- Alternative Nozzle Size:0.2mm, 0.3mm, 0.5mm
- Cup Capacity:7CC & 22CC
- Working Pressure:15-50PSI
- Dual-Action Trigger Air-paint Control.
- Carton Dimensions(CM):57x40x30
- PCS/CTN:50
- N.W./G.W.:16/18.5KGS



AB-134A



AB-134B



AB-134C



AB-134D



AB-134E





## Performance Multi-Purpose Series

Versatile and reliable high performance multi-purpose precision airbrushes

### AB-135

- Feed Type: Gravity
- Standard Nozzle Dia.:0.2 mm
- Alternative Nozzle Size:0.2mm, 0.3mm, 0.5mm
- Cup Capacity:2CC
- Working Pressure:15-50PSI
- Dual-Action Trigger Air-paint Control.
- Carton Dimensions(CM): 55.5x42X25
- PCS/CTN:50
- N.W./G.W.:15/17.5KGS



AB-135A



AB-135B



AB-135C



AB-135D



AB-135E

### AB-136

- Feed Type: Gravity
- Standard Nozzle Dia.:0.2 mm
- Alternative Nozzle Size:0.2mm, 0.3mm, 0.5mm
- Cup Capacity:2CC
- Working Pressure:15-50PSI
- Dual-Action Trigger Air-paint Control.
- Carton Dimensions(CM): 55.5x42X25
- PCS/CTN:50
- N.W./G.W.:15/17.5KGS



AB-136A



AB-136B



AB-136C



AB-136E



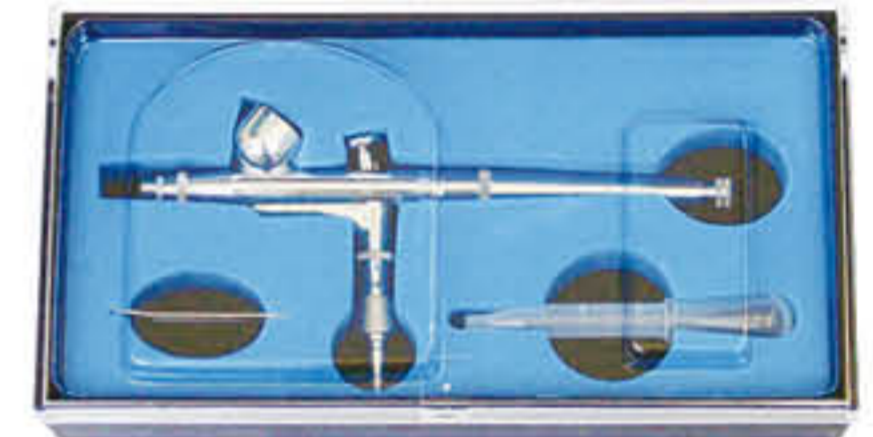


## Performance Multi-Purpose Series

Versatile and reliable high performance multi-purpose precision airbrushes

### AB-137

- Feed Type: Gravity
- Standard Nozzle Dia.:0.2 mm
- Alternative Nozzle Size:0.2mm, 0.3mm, 0.5mm
- Cup Capacity:2CC
- Working Pressure:15-50PSI
- Dual-Action Trigger Air-paint Control.
- Carton Dimensions(CM): 55.5x42X25
- PCS/CTN:50
- N.W./G.W.:15/17.5KGS



AB-137A



AB-137B



AB-137C



AB-137E

### AB-139

- Feed Type: Gravity
- Standard Nozzle Dia.:0.2 mm
- Alternative Nozzle Size:0.2mm, 0.3mm, 0.5mm
- Cup Capacity:0.5CC
- Working Pressure:15-50PSI
- Dual-Action Trigger Air-paint Control.
- Carton Dimensions(CM): 55.5x42X25
- PCS/CTN:50
- N.W./G.W.:15/17.5KGS



AB-139A



AB-139B



AB-139C



AB-139E





## Performance Multi-Purpose Series

Versatile and reliable high performance multi-purpose precision airbrushes

### AB-207

- Feed Type: Gravity
- Standard Nozzle Dia.:0.4 mm
- Alternative Nozzle Size:0.2mm, 0.4mm, 0.5mm
- Cup Capacity:2CC
- Working Pressure:15-50PSI
- Single-Action Trigger Air-paint Control
- Carton Dimensions(CM):55.5x42x25
- PCS/CTN:50
- N.W./G.W.:15/17.5KGS



AB-207A



AB-207B

### AB-209

- Feed Type: Gravity
- Standard Nozzle Dia.:0.4 mm
- Alternative Nozzle Size:0.2mm, 0.4mm, 0.5mm
- Cup Capacity:2CC
- Working Pressure:15-50PSI
- Single-Action Trigger Air-paint Control
- Carton Dimensions(CM):55.5x42x25
- PCS/CTN:50
- N.W./G.W.:15/17.5KGS



AB-209A



AB-209B



AB-209C



AB-209D





## Performance Multi-Purpose Series

Versatile and reliable high performance multi-purpose precision airbrushes

### AB-131

- Feed Type: Gravity
- Standard Nozzle Dia.:0.3 mm
- Alternative Nozzle Size:0.2mm, 0.3mm, 0.5mm
- Cup Capacity:1\*20CC & 1\*40CC
- Working Pressure: 15-50PSI
- Dual-Action Trigger Air-paint Control.
- Carton Dimensions(CM):57x40x30
- PCS/CTN:50
- N.W./G.W.:16/18.5KGS



### AB-125

- Feed Type: Suction
- Standard Nozzle Dia.:0.35 mm
- Alternative Nozzle Size:0.2mm, 0.35mm, 0.5mm
- Metal Cup:5CC
- Glass Jar:22CC
- Spanner: 1PC
- Metal Hanger: 1PC
- Working Pressure: 15-50PSI
- Dual-Action Trigger Air-paint Control.
- Carton Dimensions(CM): 57x40x30
- PCS/CTN:50
- N.W./G.W.:16/18.5KGS



AB-125A



AB-125B



AB-125C



AB-125D



AB-125E





## Performance Multi-Purpose Series

Versatile and reliable high performance multi-purpose precision airbrushes

### AB-128

- Feed Type: Suction
- Standard Nozzle Dia.:0.35 mm
- Alternative Nozzle Size:0.2mm, 0.35mm, 0.5mm
- Metal Cup:5CC
- Glass Jars:2\*22CC
- Pu Air Hose: 5FT
- Spanner: 1PC
- Metal Hanger: 1PC
- regulator:G1/4(F)-M5(M)
- Working Pressure: 15-50PSI
- Dual-Action Trigger Air-paint Control.
- Carton Dimensions(CM): 57x40x30
- PCS/CTN:50
- N.W./G.W.:16/18.5KGS



### AB-128P

- Feed Type: Suction
- Standard Nozzle Dia.:0.35 mm
- Alternative Nozzle Size:0.2mm, 0.35mm, 0.5mm
- Metal Cup: 5CC
- Glass Jar:22CC
- Spanner: 1PC
- Metal Hanger:1PC
- Working Pressure: 15-50PSI
- Dual-Action Trigger Air-paint Control.
- Carton Dimensions(CM):57x40x30
- PCS/CTN:50
- N.W./G.W.:16/18.5KGS





## Performance Multi-Purpose Series

Versatile and reliable high performance multi-purpose precision airbrushes

### AB-128A

- Feed Type: Suction
- Standard Nozzle Dia.:0.35 mm
- Alternative Nozzle Size:0.2mm, 0.35mm, 0.5mm
- Cup Capacity: 100CC
- Spanner: 1PC
- Working Pressure: 15-50PSI
- Dual-Action Trigger Air-paint Control.
- Carton Dimensions(CM): 57x40x30
- PCS/CTN:50
- N.W./G.W.:16/18.5KGS



### AB-128B

- Feed Type: Suction
- Standard Nozzle Dia.:0.35 mm
- Alternative Nozzle Size:0.2mm, 0.35mm, 0.5mm
- Metal Cup:5CC
- Glass Jars:2\*22CC
- Pu Air Hose: 5FT
- Spanner: 1PC
- Metal Hanger: 1PC
- Regulator:g1/4(F)-M5(M)
- Working Pressure: 15-50PSI
- Single-Action Trigger Air-Paint Control.
- Carton Dimensions(CM): 57x40x30
- PCS/CTN:50
- N.W./G.W.:16/18.5KGS







## Precision Detail Control Series

Applications where extremely accurate spray control is required to do highly detailed work.

### AB-180

- Feed Type: Gravity
- Standard Nozzle Dia.:0.2 mm
- Alternative Nozzle Size: 0.2mm, 0.3mm ,05mm
- Cup Capacity:9CC
- Working Pressure:15-50PSI
- Dual-Action Trigger Air-paint Control
- Carton Dimensions(CM):55.5x42x25
- PCS/CTN:50
- N.W./G.W.:15/17.5KGS



### AB-180G

- Feed Type: Gravity
- Standard Nozzle Dia.:0.2 mm
- Alternative Nozzle Size: 0.2mm, 0.3mm ,0.5mm
- Cup Capacity:9CC
- Working Pressure:15-50PSI
- Dual-Action Trigger Air-paint Control
- Carton Dimensions(CM):55.5x42x25
- PCS/CTN:50
- N.W./G.W.:15/17.5KGS



### AB-181

- Feed Type: Gravity
- Standard Nozzle Dia.:0.2 mm
- Alternative Nozzle Size:0.2mm, 0.3mm,05mm
- Cup Capacity:13CC
- Working Pressure:15-50PSI
- Dual-Action Trigger Air-paint Control
- Carton Dimensions(CM):55.5x42x25
- PCS/CTN:50
- N.W./G.W.:15/17.5KGS







## Precision Detail Control Series

Applications where extremely accurate spray control is required to do highly detailed work.

### AB-181A

- Feed Type: Gravity
- Standard Nozzle Dia.:0.2 mm
- Alternative Nozzle Size: 0.2mm,0.3mm ,05mm
- Cup Capacity:13CC
- Working Pressure:15-50PSI
- Dual-Action Trigger Air-paint Control
- Carton Dimensions(CM):55.5x42x25
- PCS/CTN:50
- N.W./G.W.:15/17.5KGS



### AB-200

- Feed Type: Gravity
- Standard Nozzle Dia.:0.2 mm
- Alternative Nozzle Size: 0.2mm, 0.3mm,0.5mm
- Cup Capacity:2CC
- Working Pressure:15-50PSI
- Dual-Action Trigger Air-paint Control
- Carton Dimensions(CM):55.5x42x25
- PCS/CTN:50
- N.W./G.W.:15/17.5KGS



### AB-201

- Feed Type: Gravity
- Standard Nozzle Dia.:0.2 mm
- Alternative Nozzle Size: 0.2mm, 0.3mm,0.5mm
- Cup Capacity:0.5CC
- Working Pressure:15-50PSI
- Dual-Action Trigger Air-paint Control
- Carton Dimensions(CM):55.5x42x25
- PCS/CTN:50
- N.W./G.W.:15/17.5KGS







## Precision Detail Control Series

Applications where extremely accurate spray control is required to do highly detailed work.

### AB-202

- Feed Type: Gravity
- Standard Nozzle Dia.:0.2 mm
- Alternative Nozzle Size: 0.2mm,0.3mm ,05mm
- Cup Capacity:5CC
- Working Pressure:15-50PSI
- Dual-Action Trigger Air-paint Control
- Carton Dimensions(CM):55.5x42x25
- PCS/CTN:50
- N.W./G.W.:15/17.5KGS



### AB-203

- Feed Type: Gravity
- Standard Nozzle Dia.:0.2 mm
- Alternative Nozzle Size: 0.2mm,0.3mm,05mm
- Cup Capacity:7CC
- Working Pressure:15-50PSI
- Dual-Action Trigger Air-paint Control
- Carton Dimensions(CM):55.5x42x25
- PCS/CTN:50
- N.W./G.W.:15/17.5KGS



### AB-208

- Feed Type: Gravity
- Standard Nozzle Dia.:0.2 mm
- Alternative Nozzle Size: 0.2mm,0.3mm ,05mm
- Cup Capacity:2CC
- Working Pressure:15-50PSI
- Dual-Action Trigger Air-paint Control
- Carton Dimensions(CM):55.5x42x25
- PCS/CTN:50
- N.W./G.W.:15/17.5KGS







## Hi-Flow All-Purpose Series

Extremely versatile hi-performance all-purpose airbrushes that can cover almost any application.

### AB-182

- Feed Type: Suction
- Standard Nozzle Dia.:0.5 mm
- Alternative Nozzle Size: 0.3mm, 0.5mm, 0.8mm
- Cup Capacity:22CC
- Working Pressure:15-50PSI
- Dual-Action Trigger Air-paint Control
- Carton Dimensions(CM):57x40x30
- PCS/CTN:50
- N.W./G.W.:16/18.5KGS



### AB-182A

- Feed Type: Suction
- Standard Nozzle Dia.:0.5 mm
- Alternative Nozzle Size: 0.3mm, 0.5mm, 0.8mm
- Cup Capacity:100CC
- Working Pressure:15-50PSI
- Dual-Action Trigger Air-paint Control
- Carton Dimensions(CM):57x40x30
- PCS/CTN:50
- N.W./G.W.:16/18.5KGS



### AB-183

- Feed Type: Gravity
- Standard Nozzle Dia.:0.5 mm
- Alternative Nozzle Size: 0.3mm, 0.5mm, 0.8mm
- Cup Capacity:2CC & 5CC & 13CC
- Working Pressure:15-50PSI
- Dual-Action Trigger Air-paint Control
- Carton Dimensions(CM):45x38x31.5
- PCS/CTN:30
- N.W./G.W.:12/14.5KGS







## Hi-Flow All-Purpose Series

Extremely versatile hi-performance all-pupose airbrushes that can cover almost any application.

### AB-186

- Feed Type: Gravity
- Standard Nozzle Dia.:0.3 mm
- Alternative Nozzle Size: 0.2mm, 0.3mm, 0.5mm
- Cup Capacity:2CC & 5CC & 13CC
- Working pressure:15-50PSI
- Dual-Action Trigger Air-paint Control
- Carton Dimensions(CM):45x38x31.5
- PCS/CTN:30
- N.W./G.W.:12/14.5KGS



### AB-187

- Feed Type: Gravity
- Standard Nozzle Dia.:0.3 mm
- Alternative Nozzle Size: 0.2mm, 0.3mm, 0.5mm
- Cup Capacity:2CC & 5CC & 13CC
- Working pressure:15-50PSI
- Dual-Action Trigger Air-paint Control
- Carton Dimensions(CM):45x38x31.5
- PCS/CTN:30
- N.W./G.W.:12/14.5KGS



### AB-178

- Feed Type: Gravity
- Nozzle Dia:0.5mm
- Cup Capacity:15CC
- Air Hose:1.8m
- Working Pressure:30-65PSI
- PCS/CTN:20
- Carton Dimensions(CM):50.5x39x32
- N.W./G.W.: 13/15.5KG

Air Eraser is a versatile instrument that can erase color errors and act as an etching too.it is used by hobbyists and manufactures to clean jewelry and fine parts, remove discoloration, rust and corrosion, etch glass or cut monograms. it is used by lithographers to highlight half-tones and erase defects without marring the surface or leving a smudge. it is used extensively by model railroaders for weathering railcars and accessories.







## Hi-Flow All-Purpose Series

Extremely versatile hi-performance all-purpose airbrushes that can cover almost any application.

### AB-156

- Feed Type: Suction
- Standard Nozzle Dia.:0.8 mm
- Alternative Nozzle Size: 0.5mm,0.8mm,1.0mm
- Glass Jars:2\*22CC
- Air Hose: 6FT
- Spanner: 1PC
- Working Pressure:15-50PSI
- Single-action Trigger Air-paint Control.
- Carton Dimensions(CM): 50.5x39x32
- PCS/CTN:20
- N.W./G.W.:9/11.5KGS



### AB-158

- Feed Type: Suction
- Standard Nozzle Dia.:0.8 mm
- Alternative Nozzle Size: 0.5mm,0.8mm,1.0mm
- Glass Jars:2\*22CC
- Air Hose: 6FT
- Spanner: 1PC
- Working Pressure:15-50PSI
- Single-action Trigger Air-paint Control.
- Carton Dimensions(CM): 50.5x39x32
- PCS/CTN:20
- N.W./G.W.:9/11.5KGS



### AB-168

- Feed Type: Suction
- Standard Nozzle Dia.:0.8 mm
- Alternative Nozzle Size: 0.5mm,0.8mm,1.0mm
- Metal Cup: 5CC
- Glass Jars:2\*22CC & 80CC
- Air Hose: 6FT
- Spanner: 1PC
- Working Pressure:15-50PSI
- Dual-action Trigger Air-paint Control.
- Carton Dimensions(CM): 50.5x39x32
- PCS/CTN:20
- N.W./G.W.:9/11.5KGS







## Hi-Flow All-Purpose Series

Extremely versatile hi-performance all-purpose airbrushes that can cover almost any application.

### AB-138

- Feed Type: Suction
- Standard Nozzle Dia.: 0.8 mm
- Alternative Nozzle Size: 0.3mm, 0.5mm, 0.8mm
- Glass Cups: 2\*22CC
- Pu Air Hose: 5FT
- Regulator: G1/4(F)-M5(M)
- Single-Action Trigger Air-paint Control
- With Plastic Body
- Carton Dimensions(CM): 57x40x30
- PCS/CTN: 50
- N.W./G.W.: 16/18.5KGS



### AB-206

- Feed Type: Gravity
- Nozzle Dia.: 0.3mm
- Cup Capacity: 5CC
- Working Pressure: 15-50PSI
- Single-Action Trigger Air-paint Control
- Carton Dimensions(CM): 55.5x42x25
- PCS/CTN: 50
- N.W./G.W.: 15/17.5KGS



### AB-115

- Feed Type: Gravity
- Standard Nozzle Dia.: 0.3 mm
- Alternative Nozzle Size: 0.3mm, 0.5mm
- Cup Capacity: 22CC
- Pu Air Hose: 5FT
- Regulator: G1/4(F)-G1/8(M)
- Working Pressure: 15-50PSI
- Single-Action Trigger Air-paint Control.
- Carton Dimensions(CM): 45x38x31.5
- PCS/CTN: 30
- N.W./G.W.: 12/14.5kg







## Hi-Flow All-Purpose Series

Extremely versatile hi-performance all-purpose airbrushes that can cover almost any application.

### AB-116

- Feed Type: Gravity
- Standard Nozzle Dia.:0.3 mm
- Alternative Nozzle Size: 0.2mm, 0.3mm,0.5mm
- Cup Capacity:7CC & 10CC
- Working Pressure:15-50PSI
- Single-Action Trigger Air-paint Control.
- Carton Dimensions(CM):45x38x31.5
- PCS/CTN:30
- N.W./G.W.:12/14.5kg



### AB-116A

- Feed Type: Gravity
- Standard Nozzle Dia.:0.3 mm
- Alternative Nozzle Size: 0.2mm, 0.3mm,0.5mm
- Cup Capacity:2CC & 5CC & 13CC
- Working Pressure:15-50PSI
- Single-Action Trigger Air-paint Control.
- Carton Dimensions(CM):45x38x31.5
- PCS/CTN:30
- N.W./G.W.:12/14.5kg



### AB-116B

- Feed Type: Gravity
- Standard Nozzle Dia.:0.5 mm
- Alternative Nozzle Size: 0.3mm, 0.5mm,0.8mm
- Cup Capacity:2CC & 5CC & 13CC
- Working Pressure:15-50PSI
- Single-Action Trigger Air-paint Control.
- Carton Dimensions(CM):45x38x31.5
- PCS/CTN:30
- N.W./G.W.:12/14.5kg







## Airbrush Pro Sets

S Series

### AB-130S

- Feed Type: Gravity
- Nozzle Dia.:0.2, 0.3 & 0.5mm
- Needle Dia.:0.2, 0.3 & 0.5mm
- Cup Capacity: 7CC
- Spanner: 1PC
- Quick Coupler: 1PC
- Working Pressure:15-50PSI
- Double-action Trigger Air-paint Control
- PCS/CTN:30
- Carton Dimensions(CM):45X38X31.5
- N.W./G.W.:12/14.5KGS



### AB-131S

- Feed Type: Gravity
- Nozzle Dia.:0.2, 0.3 & 0.5mm
- Needle Dia.:0.2, 0.3 & 0.5mm
- Cup Capacity: 2CC & 40CC
- Spanner: 1PC
- Quick Coupler: 1PC
- Working Pressure:15-50PSI
- Double-action Trigger Air-paint Control
- PCS/CTN:30
- Carton Dimensions(CM):45X38X31.5
- N.W./G.W.:12/14.5KGS



### AB-132S

- Feed Type: Gravity
- Nozzle Dia.:0.2, 0.3 & 0.5mm
- Needle Dia.:0.2, 0.3 & 0.5mm
- Cup Capacity: 7CC
- Spanner: 1PC
- Quick Coupler: 1PC
- Working Pressure: 15-50PSI
- Double-action Trigger Air-paint Control
- PCS/CTN:30
- Carton Dimensions(CM):45X38X31.5
- N.W./G.W.:12/14.5KGS







## Airbrush Pro Sets

S Series

### AB-133S

- Feed Type: Suction
- Nozzle Dia.:0.2, 0.3 & 0.5mm
- Needle Dia.:0.2, 0.3 & 0.5mm
- Cup Capacity: 22CC
- Spanner: 1PC
- Quick Coupler: 1PC
- Working Pressure: 15-50PSI
- Double-action Trigger Air-paint Control
- PCS/CTN:30
- Carton Dimensions(CM):45X38X31.5
- N.W./G.W.:12/14.5KGS



### AB-134S

- Feed Type: Suction & Gravity
- Nozzle Dia.:0.2, 0.3 & 0.5mm
- Needle Dia.:0.2, 0.3 & 0.5mm
- Capacity: 7CC
- Glass Jar Capacity: 22CC
- Spanner: 1PC
- Quick Coupler: 1PC
- Working Pressure: 15-50PSI
- Double-action Trigger Air-paint Control
- PCS/CTN:30
- Carton Dimensions(CM):45X38X31.5
- N.W./G.W.:12/14.5KGS



### AB-135S

- Feed Type: Gravity
- Nozzle Dia.:0.2, 0.3 & 0.5mm
- Needle Dia.:0.2, 0.3 & 0.5mm
- Cup Capacity: 2CC
- Spanner: 1PC
- Quick Coupler: 1PC
- Working Pressure:15-50PSI
- Double-action Trigger Air-paint Control
- PCS/CTN:30
- Carton Dimensions(CM):45X38X31.5
- N.W./G.W.:12/14.5KGS







## Airbrush Pro Sets

S Series

### AB-136S

- Feed Type: Gravity
- Nozzle Dia.:0.2, 0.3 & 0.5mm
- Needle Dia.:0.2, 0.3 & 0.5mm
- Cup Capacity: 2CC
- Spanner: 1PC
- Quick Coupler: 1PC
- Working Pressure:15-50PSI
- Double-action Trigger Air-paint Control
- PCS/CTN:30
- Carton Dimensions(CM):45X38X31.5
- N.W./G.W.:12/14.5KGS



### AB-137S

- Feed Type: Gravity
- Nozzle Dia.:0.2, 0.3 & 0.5mm
- Needle Dia.:0.2, 0.3 & 0.5mm
- Cup Capacity: 2CC
- Spanner: 1PC
- Quick Coupler: 1PC
- Working Pressure:15-50PSI
- Double-action Trigger Air-paint Control
- PCS/CTN:30
- Carton Dimensions(CM):45X38X31.5
- N.W./G.W.:12/14.5KGS



### AB-180S

- Feed Type: Gravity
- Nozzle Dia.:0.2,0.3 & 0.5 mm
- Needle Dia.:0.2,0.3 & 0.5 mm
- Cup Capacity: 9CC
- Spanner: 1PC
- Quick Coupler: 1PC
- Working Pressure:15-50PSI
- Dual-Action Trigger Air-paint Control
- Carton Dimensions(CM):45X38X31.5
- PCS/CTN:30
- N.W./G.W.:12/14.5KGS



### AB-182S

- Feed Type: Suction
- Nozzle Dia.:0.3,0.5 & 0.8 mm
- Needle Dia.:0.3,0.5 & 0.8 mm
- Cup Capacity: 22CC
- Spanner: 1PC
- Quick Coupler: 1PC
- Working Pressure:15-50PSI
- Dual-Action Trigger Air-paint Control
- Carton Dimensions(CM):45X38X31.5
- PCS/CTN:30
- N.W./G.W.:12/14.5KGS







## Airbrush Pro Sets

K Series

### AB-130K

- Feed Type: Gravity
- Nozzle Dia.: 0.2, 0.3 & 0.5mm
- Needle Dia.: 0.2, 0.3 & 0.5mm
- Cup Capacity: 7CC
- Spanner: 1PC
- Air hose: 1.8m(6FT)
- Regulator: G1/4-G1/8
- Working Pressure: 15-50PSI
- Double-Action Trigger Air-paint Control
- PCS/CTN: 20
- Carton Dimensions(CM): 50.5\*39\*32
- N.W./G.W.: 13/15.5KGS



### AB-134K

- Feed Type: Gravity & Suction
- Nozzle Dia.: 0.2, 0.3 & 0.5mm
- Needle Dia.: 0.2, 0.3 & 0.5mm
- Cup Capacity: 7CC
- Glass Jar Capacity: 22CC
- Spanner: 1PC
- Air Hose: 1.8m(6FT)
- Regulator: G1/4-G1/8
- Working Pressure: 15-50PSI
- Double-Action Trigger Air-paint Control
- PCS/CTN: 20
- Carton Dimensions(CM): 50.5\*39\*32
- N.W./G.W.: 13/15.5KG



### AB-136K

- Feed Type: Gravity
- Nozzle Dia.: 0.2, 0.3 & 0.5 mm
- Needle Dia.: 0.2, 0.3 & 0.5 mm
- Cup Capacity: 2CC
- Spanner: 1PC
- Air Hose: 1.8m(6FT)
- Regulator: G1/4(F)-G1/8(M)
- Working Pressure: 15-50PSI
- Double-Action Trigger Air-paint Control
- Carton Dimensions(CM): 50.5\*39\*32
- PCS/CTN: 20
- N.W./G.W.: 13/15.5KGS







## Airbrush Pro Sets

K Series

### AB-180K

- Feed Type: Gravity
- Nozzle Dia.:0.2,0.3 & 0.5 mm
- Needle Dia.:0.2,0.3 & 0.5 mm
- Cup Capacity: 9CC
- Spanner: 1PC
- Air Hose:1.8m(6FT)
- Quick Coupler: 1PC
- Mini Filter:1PC
- Regulator:G1/4(F)-G1/8(M)
- Working Pressure:15-50PSI
- Dual-Action Trigger Air-paint Control
- Carton Dimensions(CM):50.5x39x32
- PCS/CTN:20
- N.W./G.W.:13/15.5KGS



### AB-182K

- Feed Type: Suction
- Nozzle Dia.:0.3,0.5 & 0.8 mm
- Needle Dia.:0.3,0.5 & 0.8 mm
- Cup Capacity: 22CC
- Spanner: 1PC
- Air Hose:1.8m(6FT)
- Regulator:G1/4(F)-G1/8(M)
- Working Pressure:15-50PSI
- Dual-Action Trigger Air-paint Control
- Carton Dimensions(CM):50.5x39x32
- PCS/CTN:20
- N.W./G.W.:13/15.5KGS



### AB-183K

- Feed Type: Gravity
- Nozzle Dia.:0.3,0.5 & 0.8 mm
- Needle Dia.:0.3,0.5 & 0.8 mm
- Cup Capacity: 2CC & 5CC & 13CC
- Spanner: 1 PC
- Air Hose:1.8m(6FT)
- Quick Coupler: 1PC
- Mini Filter:1PC
- Regulator:G1/4(F)-G1/8(M)
- Working Pressure:15-50PSI
- Dual-Action Trigger Air-paint Control
- Carton Dimensions(CM):50.5x39x32
- PCS/CTN:20
- N.W./G.W.:13/15.5KGS







## Airbrush Pro Sets

K Series

### AB-186K

- Feed Type: Gravity
- Nozzle Dia.:0.2,0.3 & 0.5 mm
- Needle Dia.:0.2,0.3 & 0.5 mm
- Cup Capacity: 2CC & 5CC & 13CC
- Spanner: 1PC
- Air Hose:1.8m(6FT)
- Quick Coupler: 1PC
- Mini Filter:1PC
- Regulator:G1/4(F)-G1/8(M)
- Working Pressure:15-50PSI
- Dual-Action Trigger Air-paint Control
- Carton Dimensions(CM):50.5x39x32
- PCS/CTN:20
- N.W./G.W.:13/15.5KGS



### AB-208K

- Airbrush items: AB-208 & AB-128P
- Ab-208 Feed Type: Gravity
- AB-208 Nozzle Dia.:0.2 & 0.3mm
- AB-208 Needle Dia.:0.2 & 0.3mm
- AB-208 Cup Capacity: 2CC
- AB-128P Feed Type: Suction
- AB-128P Nozzle Dia.:0.35 & 0.5mm
- AB-128P Needle Dia.:0.35 & 0.5mm
- AB-128P Glass Jar Capacity: 22CC
- Spanner: 1PC
- Air Hose:1.8m(6FT)
- Regulator:G1/4(F)-G1/8(M)
- Working Pressure:15-50PSI
- Dual-Action Trigger Air-paint Control
- Carton Dimensions(CM):50.5x39x32
- PCS/CTN:20
- N.W./G.W.:13/15.5KGS



### AB-115K

- Feed Type: Gravity
- Nozzle Dia.:0.3 & 0.5 mm
- Needle Dia.:0.3 & 0.5 mm
- Cup Capacity: 20CC
- Spanner: 1PC
- Air Hose:1.8m(6FT)
- Regulator:G1/4(F)-G1/8(M) & G1/8(F)-M5(M)
- Working Pressure:15-50PSI
- Single-Action Trigger Air-paint Control
- Carton Dimensions(CM):50.5x39x32
- PCS/CTN:20
- N.W./G.W.:13/15.5KGS







## Airbrush Pro Sets

K Series

### AB-116K

- Feed Type: Gravity
- Nozzle Dia.:0.2, 0.3 & 0.5 mm
- Needle Dia.:0.2, 0.3 & 0.5 mm
- Cup Capacity: 7CC & 10CC
- Spanner: 1PC
- Air Hose:1.8m(6FT)
- Regulator:G1/4(F)-G1/8(M)
- Working Pressure:15-50PSI
- Single-Action Trigger Air-paint Control
- Carton Dimensions(CM):50.5x39x32
- PCS/CTN:20
- N.W./G.W.:13/15.5KGS



### AB-116AK

- Feed Type: Gravity
- Nozzle Dia.:0.2,0.3 & 0.5 mm
- Needle Dia.:0.2,0.3 & 0.5 mm
- Cup Capacity: 2CC,5CC & 13CC
- Spanner: 1PC
- Air Hose:1.8m(6FT)
- Regulator:G1/4(F)-G1/8(M)
- Working Pressure:15-50PSI
- Single-Action Trigger Air-paint Control
- Carton Dimensions(CM):50.5x39x32
- PCS/CTN:20
- N.W./G.W.:13/15.5KGS



### AB-116BK

- Feed Type: Gravity
- Nozzle Dia.:0.3,0.5 & 0.8 mm
- Needle Dia.:0.3,0.5 & 0.8 mm
- Cup Capacity: 2CC,5CC & 13CC
- Spanner: 1PC
- Air Hose:1.8m(6FT)
- Regulator:G1/4(F)-G1/8(M)
- Working Pressure:15-50PSI
- Single-Action Trigger Air-paint Control
- Carton Dimensions(CM):50.5x39x32
- PCS/CTN:20
- N.W./G.W.:13/15.5KGS







Studio Set Series



AB-600 Studio set

Model	Airbrush	Glass Jar	N.W.	Carton Dim.	PCS/CTN	N.W./G.W.
AB-600	6*AB-125	6*22CC	2KG	41*36*30	5	10/11KG



AB-612 Studio set

Model	Airbrush	Glass Jar	N.W.	Carton Dim.	PCS/CTN	N.W./G.W.
AB-612	2*AB-125 2*AB-134 2*AB-130	4*22CC 2*7CC	2KG	41*36*30	5	10/11KG



AB-618 Studio set

Model	Airbrush	Glass Jar	N.W.	Carton Dim.	PCS/CTN	N.W./G.W.
AB-618	8*AB-182	8*22CC	2KG	41*36*30	5	10/11KG



AB-613 Studio set

Model	Airbrush	Glass Jar	N.W.	Carton Dim.	PCS/CTN	N.W./G.W.
AB-613	1*AB-125 1*AB-137 1*AB-134 1*AB-130 1*AB-180 1*AB-182	3*22CC 1*7CC	2KG	41*36*30	5	10/11KG





## Spray Guns



**K-3**



**H-2000G1**

Model	Standard Nozzle	Optional Nozzle	Operating Pressure	Fluid Delivery (ml/min)	AIR Consumption	Cup Capacity	Carton Dim. (cm)	PCS/CTN	N.W./G.W.
K-3	0.5mm	0.5-1.0mm	3.0-3.5bar	40-80	2-5cfm	100ml	50*36*20	20	10/11 kgs
H-2000G1	0.8mm	0.5-0.8-1.0mm	3.0-3.5bar	70-100	1-4cfm	100ml	50*36*20	20	10/11 kgs



**F-75G**



**472P**

**Low pressure spray gun**

Model	Standard Nozzle	Optional Nozzle	Operating Pressure	Fluid Delivery (ml/min)	AIR Consumption	Cup Capacity	Carton Dim. (cm)	PCS/CTN	N.W./G.W.
F-75G	1.5mm	1.2-1.5-1.8mm	2.5bar	160-240	2-6cfm	250ml	57*42*26	20	15/17kgs
472 P	1 jet nozzle 1 fog nozzle(1.1mm)	----	2.5bar	160-260	3.0-4.5cfm	750ml	57*35*26	20	6/7kgs





## Airbrush Holders



### AH-305

Hold up 2 airbrushes  
Fix on our AFR-2000 regulator & filter on the compressor easily.  
A must-have for every airbrush artist-beginner or professional.

Carton Dim. : 52\*31\*52CM  
PCS/CTN : 150  
N.W/G.W. : 7.5/8.5KGS



### AH-301

Hold up 2 airbrushes.  
Top holder swivels to help keep airbrushes balanced  
Attach to workbench or table.  
A must-have for every airbrush artist-beginner or professional.

Carton Dim. : 41\*36\*27CM  
PCS/CTN : 40  
N.W/G.W. : 12/13.5KGS



### AH-302

Hold up 4 airbrushes.  
Top holder swivels to help keep airbrushes balanced  
Clamps to a workbench or table  
Includes a bracket for mounting an air regulator.  
A must-have for every airbrush artist-beginner or professional.

Carton Dim. : 49\*30.5\*51CM  
PCS/CTN : 40  
N.W/G.W. : 15.6/16.6KGS



### AH-303

Hold up 4 airbrushes.  
Top holder swivels to help keep airbrushes balanced  
Attach to workbench or table.  
A must-have for every airbrush artist-beginner or professional.

Carton Dim. : 58\*45\*38CM  
PCS/CTN : 40  
N.W/G.W. : 22/23.5KGS



### AH-304

Include 6 branch air valves and a 360rotary pressure gauge  
Top holder swivels to help keeping airbrushes valanced.  
Holds up to 8 airbrushes.  
Can be connected directly with mini air compessor.  
Suitable for all kinds of airbrushes

Carton Dim. : 48\*33\*24CM  
PCS/CTN : 6  
N.W/G.W. : 11/13KGS





**Airbrush Accessories**



**Airbrush Cleaning Pot**

**AH-501**



**Airbrush Cleaning Pot**

**AH-502**



**AH-306**

**Airbrush Paint Holder**



**AB-498**

**Nozzle spanner & reamer**



**AB-497**

**Air valve assembly tool**



**AB-496**

**Needle guide assembly tool**



**AH-307**

**Airbrush Handle Holder**



**AH-505**

**Airbrush cleaning brush**



**AH-506**

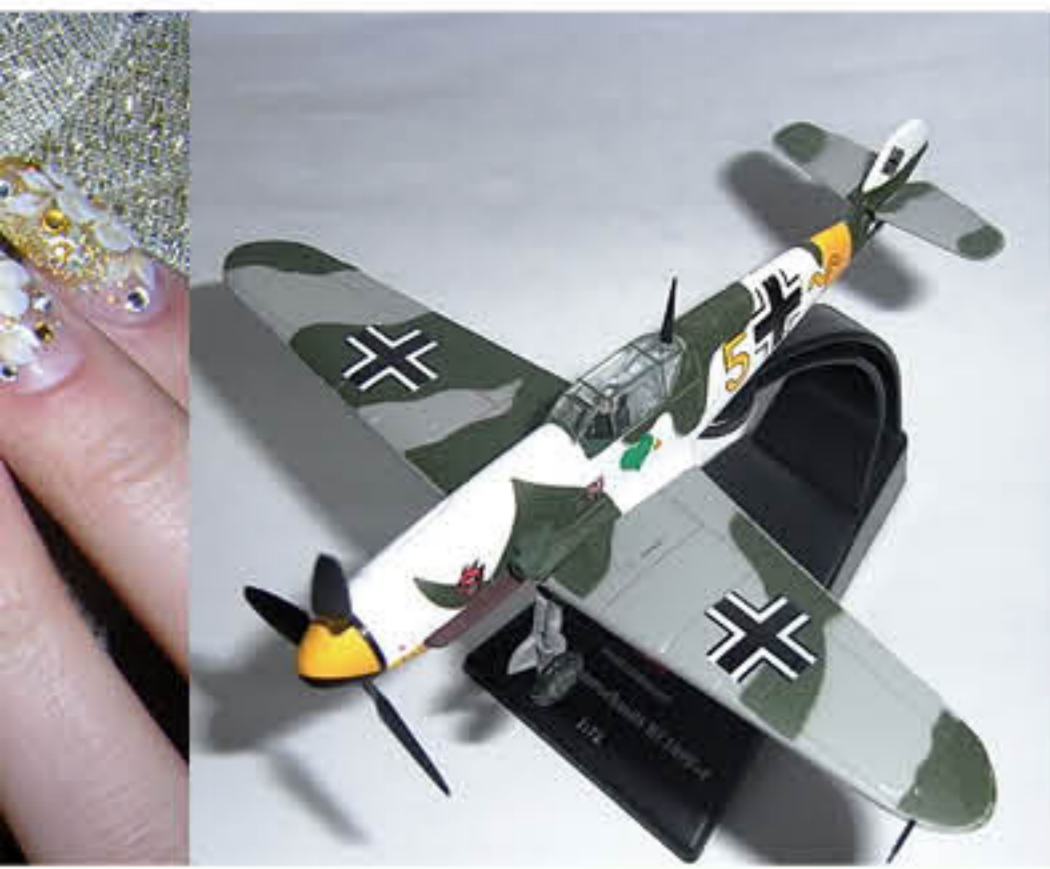
**Airbrush cleaning brush**



**AH-500**

**Nozzle cleaning reamer**





## Airbrush Accessories / Manifolds



**AB-400**  
Quick-release & Air flow  
Control coupler  
G1/8"female-G1/8" male



**AB-401**  
Quick-release coupler  
G1/8" female-G1/8" male



**AB-402**  
Air flow Control coupler  
G1/8"female-G1/8" male



**AB-403**  
One G1/8" female-Three G1/8" male



**AB-404**  
Air filter coupler  
G1/8"female-G1/8" male



**A1**  
G1/8 male-G1/8 male



**A2**  
G1/4 male-G1/8 male



**A3**  
G1/4 Female-G1/8 male



**A4**  
G1/4 male-G1/8 Female



**A5**  
G1/4 male-G1/4 male



**A7**  
G1/8 male-M5\*0.5  
Female



**A6**  
G1/4 Female-M5\*0.5 male



**A6-1**  
G1/8 Female-M5\*0.5 male



**A8-1**  
G1/8 male-for Aztec



**A8-2**  
G1/8 male-for Badger



**A8-3**  
G1/8 male-for Paasche



**AB-405**  
G1/4 Female-M5\*0.5 male



**A9-3**  
3 Way manifold  
one G1/4 Female-Three 1/8 male  
Air flow adjustable



**A9-4**  
4 Way manifold  
one G1/4 Female-Four 1/8 male  
Air flow adjustable

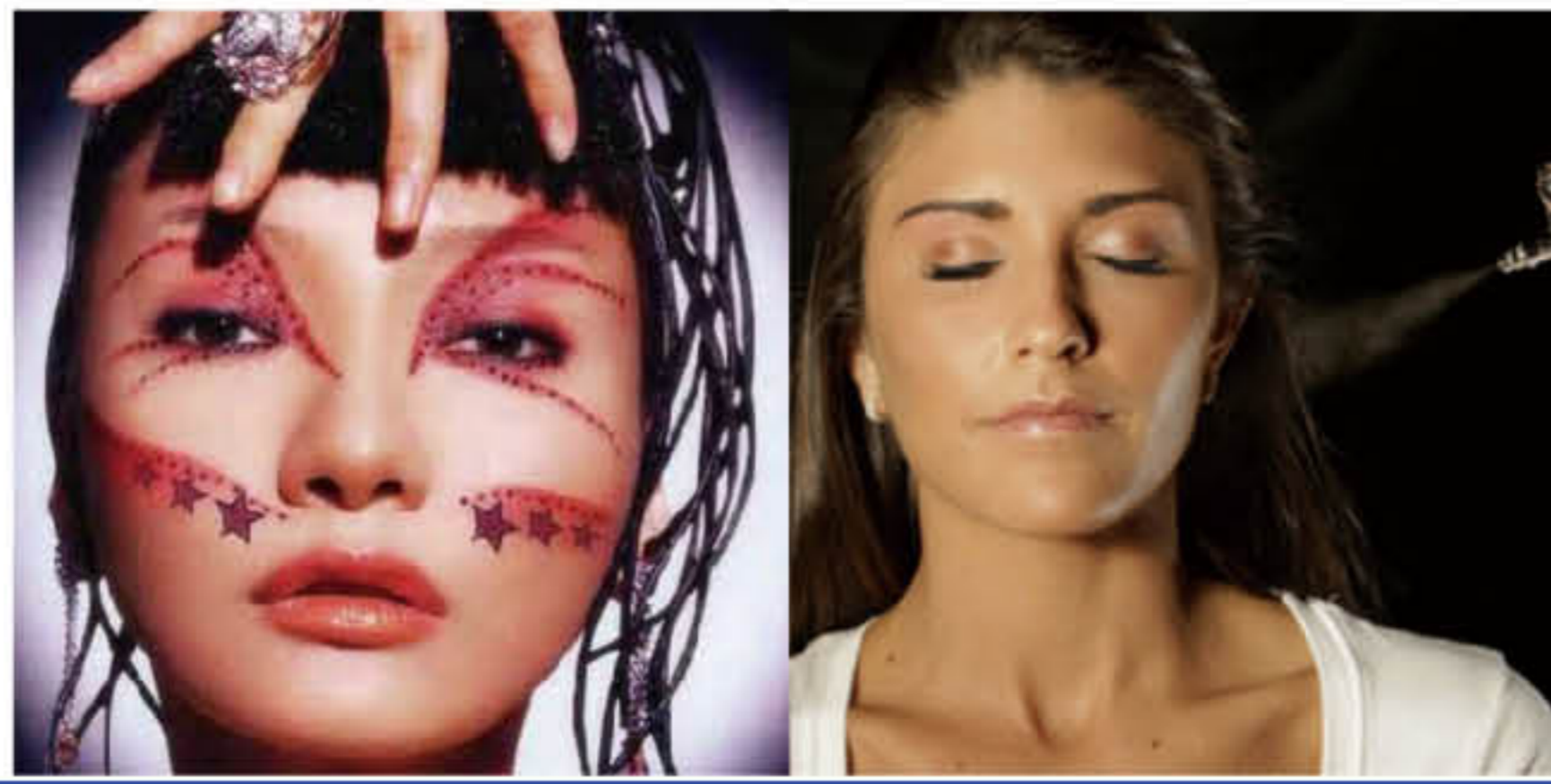


**A9-5**  
5 Way manifold  
one G1/4 Female-Five 1/8 male  
Air flow adjustable



**A9-6**  
6 Way manifold  
one G1/4 Female-Six 1/8 male  
Air flow adjustable





## Airbrush Hoses



**AH-18**  
Dia:4X2.5mm  
Length:1.5m  
Adaptor:M5\*0.5-G1/8"



**AH-19**  
Dia:4X2.5mm  
Length:1.5m  
Adaptor:G1/8"-G1/8"



**AH-20**  
Dia:4X2.5mm  
Length:1.5m  
Adaptor:M5X0.5-M5X0.5



**AH-22**  
Dia:6X4mm  
Length:3m



**AH-22A**  
Dia:6X4mm  
Length:3m  
Adaptor:G1/8"-G1/8"



**AH-22B**  
Dia:6X4mm  
Length:3m  
Adaptor:G1/4"-G1/8"



**AH-29**  
Dia:6X4mm  
Length:3m  
Adaptor:G1/4"-Universal Badger Adaptor



**AH-29A**  
Dia:6X4mm  
Length:3m  
Adaptor:G1/8"-Universal Badger Adaptor



**AH-31**  
Dia:12X6.5mm  
Length:1.8m(6ft),3m(10ft)  
Adaptor:G1/4"-G1/4"



**AH-21**  
Dia:7.5X4.5mm  
Length:1.8m(6ft),3m(10ft)  
Adaptor:G1/4"-G1/8"



**AH-21A**  
Dia:7.5X4.5mm  
Length:1.8m(6ft),3m(10ft)  
Adaptor:G1/4"-G1/4"



**AH-23**  
Dia:7.5X4.5mm  
Length:1.8m(6ft),3m(10ft)  
Adaptor:G1/4"-1/4"-40





## Airbrush Hoses



**AH-24**  
Dia:7.5X4.5mm  
Length:1.8m(6ft),3m(10ft)  
Adaptor:G1/8"-G1/8"



**AH-24B**  
Dia:7.5X4.5mm  
Length:1.8m(6ft),3m(10ft)  
Adaptor:G1/8"-G1/8"



**AH-27**  
Dia:7.5X4.5mm  
Length:1.8m(6ft),3m(10ft)  
Adaptor:G1/8"-G1/8"  
With the quick-release coupler



**AH-26**  
Dia:7.5X4.5mm  
Length:1.8m(6ft),3m(10ft)  
Adaptor:G1/8"-G1/8"  
With the Filter



**AH-26A**  
Dia:7.5X4.5mm  
Length:1.8m(6ft),3m(10ft)  
Adaptor:G1/4"-G1/8"  
With the Filter



**AH-27A**  
Dia:7.5X4.5mm  
Length:1.8m(6ft),3m(10ft)  
Adaptor:G1/4"-G1/8"  
With the quick-release coupler



**AH-30**  
Dia:7.5X4.5mm  
Length:1.8m(6ft),3m(10ft)  
Adaptor:G1/8"-G1/8"  
With the quick-release coupler and  
Air control coupler



**AH-30A**  
Dia:7.5X4.5mm  
Length:1.8m(6ft),3m(10ft)  
Adaptor:G1/4"-G1/8"  
With the quick-release coupler  
and Air control coupler



**AH-28**  
Air hose reel  
Length:28ft  
Hose Dia:8 x 5mm  
It can conveniently be fasten  
to walls, ceiling, doors, etc.



**AH-35**  
Dia:8X6mm  
Length:5m  
Adaptor:G1/4"-G1/4"



**AH-25**  
Connect:1/4BSP female  
Application field:  
A. To inflate cars and motorcycles  
B. To inflate bicycle  
C. To inflate basketball football and other sport balls



**AH-25A**  
Connect:1/8BSP female  
Application field:  
A. To inflate cars and motorcycles  
B. To inflate bicycle  
C. To inflate basketball football and other sport balls





## Airbrush Fittings



AB-37



AB-53



AB-41



AB-42



AB-42-182



AB-43



AB-45



AB-65



AB-46



AB-47



AB-48



AB-50



AB-51



AB-52



AB-36



AB-40



AB-60



AB-61



AB-63



AB-66



AB-68



AB-69



AB-49-158



AB-49



AB-11  
7CC  
Suit for AB-132,  
AB-133,AB-134



AB-12  
5CC



AB-01  
Glass Jar 22cc



AB-02  
Glass Jar 22cc  
Suit for AB-128,  
AB-128P,  
AB-125,AB-182



AB-03  
Glass Jar 22cc  
Suit for AB-138,  
AB-138P,AB-158



AB-07  
Glass Jar 22cc  
Suit for AB-132,  
AB-133,AB-134



AB-10  
Glass Jar 90cc  
Suit for AB-138,  
AB-138P,AB-158



AB-05P  
Plastic Jar 80cc  
Suit for AB-138,  
AB-138P,AB-158

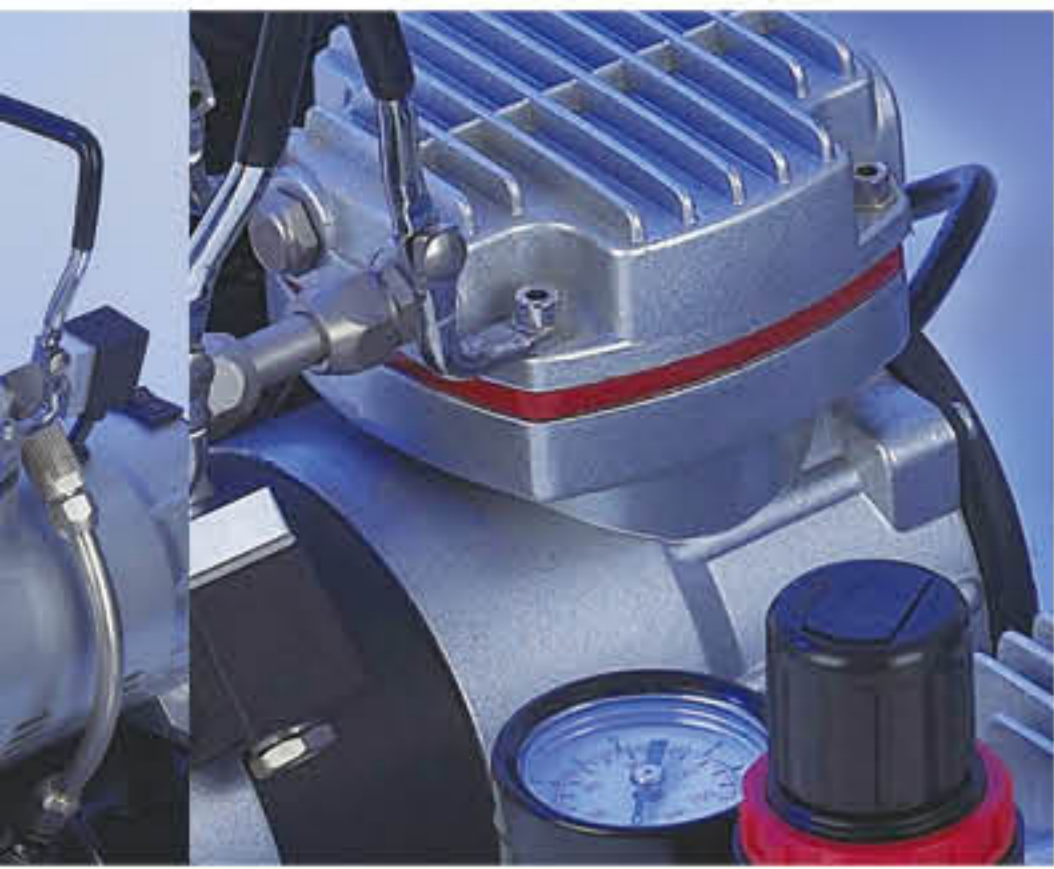


AB-06P  
Plastic Jar 80cc  
Suit for AB-128,  
AB-128P,  
AB-125,AB-182



AB-08P  
Plastic Jar 100cc  
Suit for AB-128,  
AB-128P,  
AB-125,AB-182





### Airbrush Compressor Fittings



AF-15



AFR-2000



AW-2000



AC-113



AC-114



AC-115



AC-116



AC-104



AC-105



AC-106



AC-107



AC-108



AC-109



AC-110



AC-111



AC-112



AC-100



AC-101



AC-102



AC-103





## Nail Art & Tattoo Stencils, Ink



Nail Stencils

Total 10 sets, each set including 20 pieces paper, each paper including around 10 pieces different picture.



30ml Nail Ink

White, Black, Lemon Yellow, Yellow Ochre, Light Yellow, Napple's Yellow, Mid Yellow, Mid Green, Rose, Crimson, Vermilion, Light Magenta, Scarlet, Orange, Purple, Burnt Sienna, Brown, Kelly, Blue Lake, Aqua Blue, Ultramarine, Phthalocyanine Green, Phthalocyanine Blue, Light Pink, Red, Light Purple, Misty Rose, Flesh color, Blue;

Pearly Black, Pearly Wine Red, Pearly Purple, Pearly Bamboo Green, Pearly Orange, Pearly White, Pearly Silvery Gray, Pearly Kelly, Pearly Light Magenta, Pearly Rose, Pearly Golden;

Fluorescent Blue Lake, Fluorescent Rose, Fluorescent Lemon Yellow, Fluorescent Scarlet, Fluorescent Golden.



100ml Tattoo Common Ink

white, black, red, blue, yellow, green, rose, emerald, royal blue, pale purple, saffron, peach red, brown, bright yellow, light blue, light green, aqua blue, fuchsia



1L Tattoo Common Ink



40ml Tattoo Pearly Ink

red, blossing blue, light green, yellow, golden, rosy, black green, bright blue, silvery white, silvery black, purple, reddish



40ml Tattoo Glowing Ink



Tattoo Stencils

Total 12 sets of airbrush tattoo stencil. Each book includes about 25 page of A4 paper with Different size of picture.



40ml Tattoo Fluorescent Ink

Orange, Yellow, Green, Light Blue



100ml Tattoo Finalized Ink

100ml Finalized Ink, make designs last longer



